

Nireeda Apartments

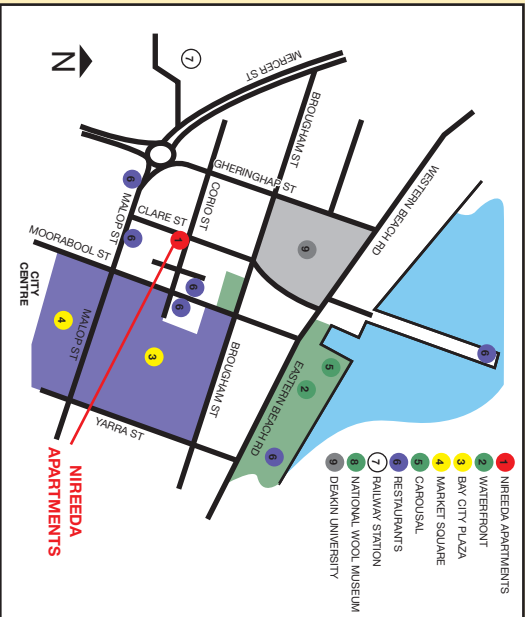
ON CLARE

GEELONG



1-3 Clare Street Geelong 3220
Telephone: 03 5221 0566
Email: info@nireedaapartments.com.au
www.nireedaapartments.com.au

...within walking distance to all attactions



Nireeda Apartments

ON CLARE

are only 300 metres from:

- Waterfront
 - Carousel
 - Restaurants & Fast Foods
 - Railway Station
 - Public Transport
 - Central Business District
- ... & a short drive to:
- Bellarine Peninsula
 - Great Ocean Road
 - Surf Coast
 - Wineries

1-3 Clare Street Geelong 3220

Telephone: 03 5221 0566 Facsimile: 03 5229 9518

Email: info@nireedaapartments.com.au

www.nireedaapartments.com.au

Geelong's latest affordable accommodation

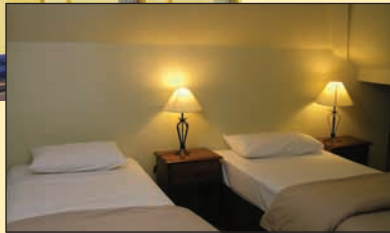
- Major Credit Cards accepted





Newly constructed apartments in a 1959 building situated right in the heart of Geelong's Central Business District.

Apartments tastefully furnished with all modern conveniences.



Guest Apartment Facilities



Deluxe family style apartments.
Bedrooms on mezzanine level.
Provides privacy for living areas.
Plus exclusive one bedroom studio apartments.



- Television
- Fully equipped kitchens
- Guest laundries on both floors
- Security carparking
- Non smoking property

